

# NORTH CAROLINA

January  
2025

## THE STATE OF AVIATION

*What Aviation Means To Our Economy*



DIVISION OF  
**AVIATION**

# North Carolina: The State of Aviation

Aviation continues to be a cornerstone of North Carolina's economy, driving growth, innovation and opportunity. The emergency response to Hurricane Helene in 2024 once again underscored the crucial role airports and aviation play in disaster response and recovery.

Aviation and airports supported the unprecedented relief efforts and ensured supplies were delivered quickly and efficiently. Crewed and Uncrewed air missions informed recovery efforts for both search and rescue and repair of transportation infrastructure. We dedicate this report to the people and communities impacted by this storm and those whose efforts have supported recovery.

Since our last economic impact report in 2023, North Carolina's public airports have expanded their footprints and now deliver more services and have greater impacts in their communities. This is driven by the major infrastructure investments that state and federal governments have made in recent years and the sharp climb in airline passenger traffic statewide.

NCDOT's biennial economic impact study of airports shows that the state's 72 public airports now contribute more than \$88 billion in economic impacts each year, which is 11% of North Carolina's Gross Domestic Product (total output of goods and services).

The analysis shows that airports support 427,000 jobs across the state, which generate \$34 billion in personal income and \$4.8 billion in state and local tax revenues every year.

That translates to a return of more than \$500 in economic output and \$12 in state tax revenues each year for every \$1 of state investment.

These findings affirm that North Carolina's aviation system continues fueling economic growth, turning public investments into jobs and revenues, and connecting people, companies and communities to markets and destinations worldwide.



Photo: LabCorp corporate hangar at  
Burlington-Alamance Regional Airport  
On the cover: Elkin Municipal Airport Runway 25



**\$88**  
**BILLION**  
ECONOMIC  
IMPACT



**427,000**  
**JOBS**



**\$34**  
**BILLION**  
IN PERSONAL  
INCOME



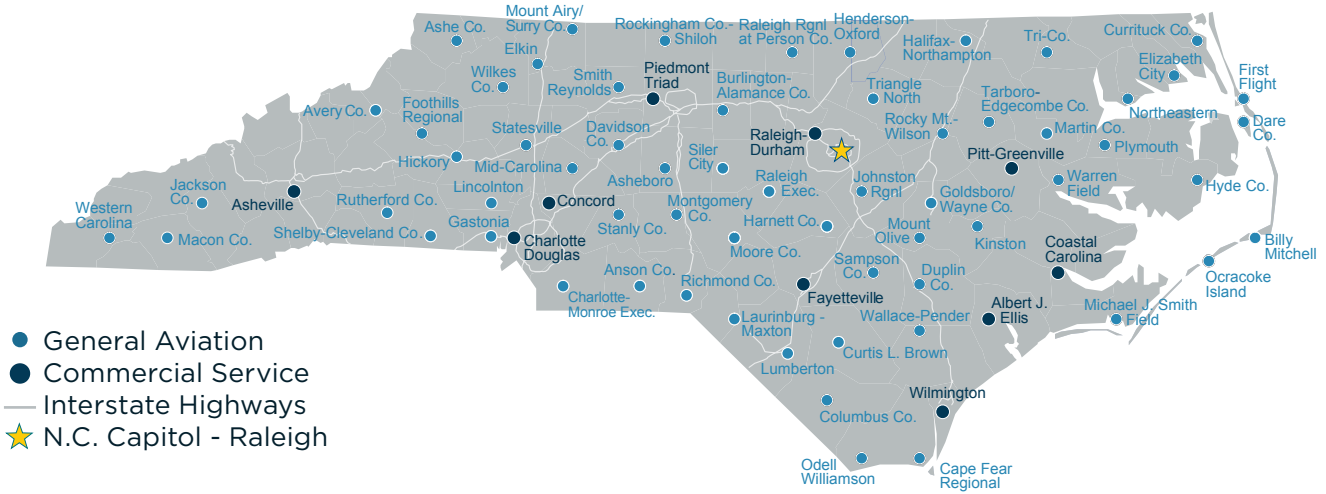
**\$4.8**  
**BILLION**  
IN TAX  
REVENUE



- 1 *North Carolina: The State of Aviation*
- 2 *North Carolina Boasts Robust Air Transportation System*
- 3 *Passenger Service Expands to Meet Soaring Demand*
- 4 *Airports Move High-value, Time-sensitive Cargo*
- 5 *Airport Enterprises Create Jobs and Tax Revenues*
- 6 *Airports Anchor Aerospace Manufacturing*
- 7 *Aircraft Maintenance Sector Keeps Aviation in the Air*
- 8 *Airport-Military Connections Boost Local Economies*
- 9 *Advanced Air Mobility Takes Flight*
- 10 *Workforce Programs Develop Talent Pipeline*
- 11 *North Carolina Aviation Higher Education Programs*
- 12 *Economic Impacts of North Carolina Airports*

# North Carolina Boasts Robust Air Transportation System

## North Carolina Public Airports



*Ninety-six percent of the state's population lives within a 30-minute drive of a public airport.*


North Carolina's system of 72 public airports provides a broad range of air transportation services for communities and travelers. Ten commercial service airports offer regularly scheduled passenger services. Sixty-two general aviation airports provide additional charter services, flight schools and support for industries such as agriculture, health care, military operations, and disaster and emergency services.

Ninety-six percent of North Carolina's population lives within a 30-minute drive of a public airport, offering convenient access to destinations worldwide.

N.C.'s 72 public airports are part of the National Plan of Integrated Airport Systems (NPIAS). They are public-use, publicly owned airports considered significant to the national air transportation system and thus eligible to receive federal grants.

NCDOT Aviation supports local investment in these airports with state and federal grants, long-range planning, aviation business development, technical assistance and management and operational training.

**The goal: drive innovation and sector development that provides leading-edge aviation services for North Carolina and creates a strong aviation economy.**



*“Duke Life Flight partners closely with local and regional airports across North Carolina to ensure safe operation and the ability to complete life-saving missions. This collaboration enhances our capacity to provide urgent medical care and supports the public good across the state.”*

**René Borghese**, Administrative Director  
 Duke Life Flight

# Passenger Service Expands to Meet Soaring Demand

Passenger service at North Carolina airports climbed to 74.3 million in 2023, up 30% from 2021 and 20% from the pre-pandemic 62 million. Those passengers supported more than 17,000 airline jobs paying average salaries of \$96,888.

Airlines continued adding additional international and nonstop flights in the past two years.

Raleigh-Durham International Airport (RDU), for instance, doubled the number of nonstop international destinations. RDU carriers now fly direct to Calgary, Toronto, Vancouver

and Montreal in Canada; Cancun, Mexico; Frankfurt; London; Mexico City; Montego Bay, Jamaica; Panama City; Paris; Punta Cana, Dominican Republic; Reykjavik, Iceland; San Juan, Puerto Rico and St. George's, Bermuda. Charlotte Douglas International Airport (CLT), home to American Airlines' second-largest U.S. hub, offers more than 180 non-stop destinations, including over 35 international destinations.

Meanwhile, tourism traffic continued boosting passenger counts at Asheville Regional Airport in the N.C. mountains and Wilmington International Airport on the coast.



*“An 88% increase in international travel since 2022 helped make RDU the fastest-growing Top 50 airport in the country last year. RDU now offers travelers in the Research Triangle Region more choices than ever before, including a record number of nonstop international destinations.”*

**Mike Landguth**, President and CEO, Raleigh Durham International Airport Authority

## N.C. AIRLINES FAST FACTS

- ▶ **21** commercial airlines
- ▶ **188** airline destinations
- ▶ **74.3 million** passengers (2023)
- ▶ **17,050** airline jobs (2023)
- ▶ **\$96,888** average salaries (2023)



Aeromexico, Air Canada and Lufthansa are among the carriers parked at Raleigh-Durham International Airport's international gate at Terminal 2.

# Airports Move High-value, Time-sensitive Cargo

## N.C. CARGO FAST FACTS

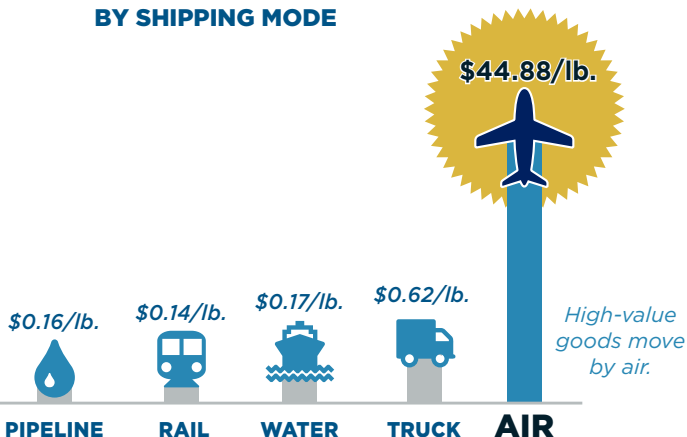
- ▶ **440,000** tons moved
- ▶ **487** jobs
- ▶ **\$67,280** average wages

A National Guard crew member loads water onto a CH-47F Chinook for Hurricane Helene relief efforts.

*“Our business relies on North Carolina’s airports. They enable us to deliver critical, time-sensitive cargo such as medical supplies, important documents and even live animals quickly and efficiently.”*

**Michael Bandalan, CEO,**  
Mountain Air Cargo

### CARGO VALUE PER POUND BY SHIPPING MODE



More than 440,000 tons of cargo moved through the state’s airports in 2023, supporting nearly 500 jobs that pay average wages of \$67,280.

North Carolina’s location on the East Coast serves as a gateway for domestic and international trade. Robust infrastructure and a thriving economic ecosystem make North Carolina a leading state for air cargo.

Cargo companies leverage the state’s extensive network of commercial and general aviation airports, interstate highways, railroads, intermodal facilities and seaports, which facilitate efficient distribution and logistics.

Denver, N.C.-based Mountain Air Cargo, for instance, operates more than 150 daily flights to nearly 55 destinations on the East Coast. Those include destinations in the Caribbean and Greensboro, Manteo, New Bern, Raleigh and Wilmington in North Carolina. That activity supports the company’s full-service aircraft maintenance operation in Kinston.

Air cargo supports virtually every industry sector, from agriculture to automotive. It is ideally suited for high-value, time-sensitive and perishable items shipped by pharmaceutical, manufacturing, technology companies and others that benefit from rapid air transport.

# Airport Enterprises Create Jobs and Tax Revenues



*A single \$15.5 million aircraft based at Hickory Regional Airport generates the same property taxes as 60 typical homes, without the high level of public infrastructure residential areas require.*

North Carolina's public airports serve as gateways to their communities. Their restaurants and retail shops, car rental services, advertising spaces and enterprises support jobs that operate at and near airports. They connect travelers to the goods and services in their regions. They create tax revenues that are funneled back into communities for essential services. And they help the airport sustain its operations and expand its facilities.

North Carolina gains significant returns from nearly 4,000 aircraft based at the state's general aviation facilities, which generate \$6.8 million in property taxes for local governments. A single \$15 million aircraft based at Hickory Regional Airport, for instance, generates the same property taxes as 60 typical homes, without the high level of public infrastructure residential areas require.

Airports sell more than 574 million gallons of aviation fuel a year, generating more than \$12 million in fuel tax revenues. Those tax revenues fund infrastructure improvements at general aviation airports that attract job-creating companies.

Seventeen rental car companies and 66 retail outlets at the state's 10 commercial services airports also create jobs and generate tax revenues that benefit the state and local communities.

## N.C. AIRPORT ENTERPRISE FAST FACTS

- ▶ **17** rental car companies
- ▶ **\$106.5 million** rental car tax revenues
- ▶ **66** retail outlets
- ▶ **770** retail jobs
- ▶ **\$6.8 million** retail sales tax revenues
- ▶ **3,987** based aircraft
- ▶ **\$6.8 million** based aircraft tax revenues
- ▶ **574 million** gallons aviation fuel sold
- ▶ **\$12 million** aviation fuel tax revenues

# Airports Anchor Aerospace Manufacturing



*“Collins Interiors has called Winston-Salem home for over fifty years. We appreciate the blend of skilled workforce, strong educational institutions and critical infrastructure Smith Reynolds Airport and the broader Piedmont Triad area provide.”*

**Sandra Eich**, Vice President,  
Operations, Collins Aerospace Interiors

## N.C. AEROSPACE FAST FACTS

- ▶ **200+** N.C. aerospace companies
- ▶ **400+** N.C. aerospace supply chain companies
- ▶ **6,163** jobs
- ▶ **\$106,132** average salaries

Honda Aircraft Company is expanding its footprint in Guilford County to manufacture a lighter, longer-range version of its HondaJet aircraft.

DMA Industries LLC, supplier of aftermarket automotive and heavy-duty replacement parts, is expanding and modernizing its distribution operations in Columbus County.

American Titanium Metal LLC is building a major manufacturing plant in Cumberland County to produce aerospace-grade titanium domestically.

These companies are among 200+ aerospace manufacturers and suppliers who call North Carolina home. The state's aerospace sector provides more than 6,000 jobs paying average annual salaries of \$106,000.

North Carolina's aerospace industry benefits from multimodal infrastructure, which includes the nation's second largest state-maintained road network, nearly 3,000 miles of freight railroads, two major water ports, an inland port and 72 public airports. The state's vibrant aerospace cluster is able to leverage this robust transportation network to stay connected to major East Coast and foreign supply chain routes and markets.



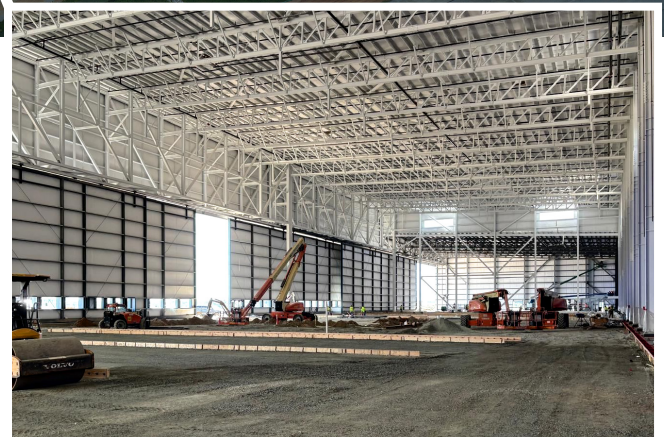
*A Collins Aerospace Interiors employee assembles an airplane monument for an airline customer at the company's Fairchild Winston-Salem production facility. The company is a world leader in designing, developing and manufacturing cabin interior products and services.*



# Aircraft Maintenance Sector Keeps Aviation in the Air



Marshall's 192,000 square-foot MRO facility with a dedicated paint barn, at Piedmont Triad International Airport (PTI) will provide engineering and maintenance services to U.S. operators of the C-130 Hercules aircraft.



*"We are very excited to be joining the thriving aerospace and engineering ecosystem and community around PTI. The Piedmont Triad region stands out for its skilled local workforce, excellent training facilities and being a great place to live, all of which were key factors in our site selection process."*

**Bob Baxter**, Chief Growth Officer,  
Marshall

As North Carolina grows as a global aerospace hub, so does the industry that keeps aviation in the air. The state's maintenance, repair and overhaul, or MRO, sector employs more than 5,300 people at average wages of \$61,100.

Three companies are adding significant capacity to the state's MRO industry. Jet East, a West Star Aviation Company, for instance, one of the nation's leading MRO companies, opened a location further west, at Statesville Regional Airport, in 2023. Jet East provides full-service scheduled and unscheduled maintenance and repair service. They currently have approximately 110 employees.

Fleet Readiness Center East (FRCE) is expanding its presence in the state with a new MRO facility at the North Carolina Global TransPark in Kinston to support Navy and Marine Corps aircraft. FRCE, North Carolina's largest MRO, employs more than 4,000 civilian, military and contract workers.

United Kingdom-based Marshall, a global MRO, is expected to open its first U.S. facility at Piedmont Triad International Airport (PTI) in mid-2025, employing more than 200 people.

## N.C. MRO FAST FACTS

- ▶ **205** related companies
- ▶ **5,319** jobs
- ▶ **\$61,100** average wages
- ▶ **5th highest** U.S. state for MRO jobs

# Airport-Military Connections Boost Local Economies



U.S. Coast Guard aircraft stationed at Elizabeth City Regional Airport.

## N.C. MILITARY AVIATION FAST FACTS

- ▶ **8** military bases
- ▶ **145,000** employees
- ▶ **18,000** trained veterans exit service annually

*“North Carolina’s military installations enjoy long-standing, mutually beneficial partnerships with many of our airports. These partnerships provide vital services for military operations and revenues that help airports sustain their operations and grow.”*

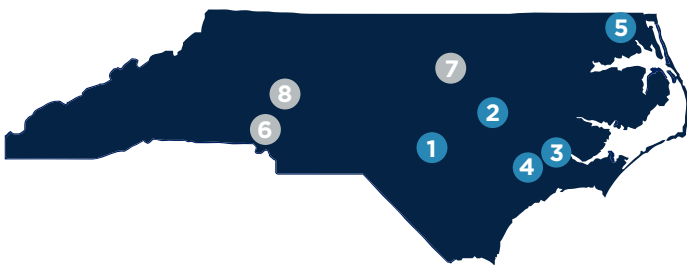
**Scott Dorney**, Executive Director,  
North Carolina Military Business Center

Elizabeth City Regional Airport stands as a vital hub for military operations and community growth, thanks to its unique partnership with the U.S. Coast Guard. Through a joint-use agreement, the airport and Coast Guard share facilities, ensuring efficient operations for both civilian and military needs.

This collaboration is built on mutual support, with the airport providing ramp space, contract fueling service and, recently, investing in its own runway maintenance to enhance the shared infrastructure. The Coast Guard, in turn, carefully considers the airport’s operational needs, working together to maintain a balanced relationship.

It is one of many examples of mutually beneficial relationships between the state’s public airports and military installations that create economic benefit for North Carolina communities. Airports support military operation with fuel, infrastructure for flight training, maintenance and repair services, and passenger service, which also generate revenues for the airports.

The benefits of the Elizabeth City partnership with the Coast Guard, for example, ripples through the local economy. The airport generates \$504 million in economic impact annually, with more than 3,700 jobs tied to its operations. The Coast Guard, as the largest employer in the county, anchors much of this economic activity. From search and rescue missions to law enforcement and fleet maintenance, the Coast Guard’s work supports the entire East Coast, with the airport playing a key role in sustaining their readiness.



## KEY MILITARY AVIATION LOCATIONS

- 1 Pope Field at Fort Liberty | Fayetteville
- 2 Seymour Johnson Air Force Base | Goldsboro
- 3 Marine Corps Air Station Cherry Point | Havelock
- 4 Marine Corps Air Station New River | Jacksonville
- 5 Elizabeth City Coast Guard Air Station

### N.C. NATIONAL GUARD

- 6 145<sup>TH</sup> Airlift Wing | Charlotte Douglas and Stanly County
- 7 449<sup>TH</sup> Theater Aviation Brigade | Raleigh-Durham County
- 8 449<sup>TH</sup> Theater Aviation Brigade | Rowan County

# Advanced Air Mobility Takes Flight



*“North Carolina was an early adopter, with the Raleigh Executive Jetport and the NCDOT leaning in quickly to partner with us on the installation and commissioning of the first electric aircraft charger in the state. This has led to growing awareness and opportunities across the state, which will be a big part of ensuring North Carolina is part of this next wave of aviation.”*

**Blain Newton,** Chief Information Officer,  
BETA Technologies

*BETA's ALIA conventional takeoff and landing electric aircraft awaiting charging at Raleigh Executive Jetport in Sanford.*

North Carolina took a step toward sustainable aviation in October 2023 with groundbreaking at Raleigh Executive Jetport in Sanford for the first two electric aircraft chargers to be installed in the state. Electric chargers designed by BETA Technologies charge electric aircraft, cars and trucks. The installation set the stage for electrifying aviation statewide once electric aircraft are cleared by the Federal Aviation Administration for routine commercial flight.

North Carolina hosts a range of companies such as BETA that are leading advancements in drone technology, autonomous systems and applications across various sectors, from agriculture to logistics, public safety and environmental monitoring.

NCDOT Aviation, a leader in integrating uncrewed aircraft systems (UAS) into the National Airspace System, is now paving the way in transportation's next frontier – sustainable, autonomous and connected air and ground mobility.

NCDOT's Aviation Division also recently:

- Launched the N.C. Advanced Transportation Mobility Strategic Plan, a pioneering initiative to leverage innovations of NCDOT's Aviation, Integrated Mobility and Rail divisions to create connected multimodal transportation.
- Formed the University Transportation Center of Excellence for Advanced Air Mobility and Uncrewed Aircraft Systems to conduct research that supports the strategic plan. The initiative brings together three universities to integrate cutting-edge air mobility technologies into the state's transportation systems.

- Won a competitive \$500,000 planning grant (a first step to securing additional implementation funding) to identify targeted technology and infrastructure upgrades at rural airports in the Appalachian region. This will prepare the airports for aviation's new frontier. It will also boost local economies and provide a model for the state.
- Creation of the Advanced Air Mobility Planning Grant Program, providing \$1 million annually for local planning initiatives that support statewide AAM goals.

AAM and UAS activity continues to fuel a new industry sector, with more than 230 companies that use drones for their business operations, creating more than 280 jobs and \$67.8 million in annual AAM business revenues.

## ADVANCE AIR MOBILITY FAST FACTS

- ▶ **230+** companies
- ▶ **280+** jobs
- ▶ **\$67.8 million** revenues

# Workforce Programs Develop Talent Pipeline



Chief Infrastructure Officer Jack Christine gathers with University of North Carolina at Charlotte students on the ramp at Charlotte Douglas International Airport. (Photo credit: Charlotte Douglas International Airport)

## N.C. AVIATION EDUCATION FAST FACTS

- ▶ **31,000** STEM post-secondary graduates annually
- ▶ **4** universities with bachelor's degrees or above in aviation-related fields
- ▶ **7** community colleges and **1** private training college offering associate degrees, diplomas and certificates
- ▶ **50** flight schools with aviation workforce content

North Carolina is fueling its aerospace future by investing in talent and education. With a range of cutting-edge programs, the state is preparing its workforce for careers that are shaping the skies today and tomorrow. From new initiatives focusing on uncrewed aircraft systems and advanced air mobility, North Carolina is ensuring that aviation remains a thriving industry.

Charlotte Douglas International Airport (CLT) is leading the way through its partnership with UNC Charlotte. The Charlotte Aviation Innovation and Research Institute (Charlotte AIR) is addressing critical challenges in airport infrastructure and operational efficiency.

Charlotte AIR is at the forefront of preparing the next generation of aviation professionals. Through its unique living lab at CLT, UNC Charlotte engineering students get unparalleled hands-on experience. They work on real-world aviation challenges, from optimizing airport infrastructure to integrating cutting-edge technology, all while learning directly from industry experts.



*“As North Carolina’s urban research university, UNC Charlotte is the ideal partnership for Charlotte Douglas International Airport as we continue to build an airport for the future. The ability to provide both research and learning opportunities in a living laboratory environment, like the airport, will help shape the future of aviation while benefitting students with hands on learning.”*

**Jack Christine**, Chief Infrastructure Officer,  
Charlotte Douglas International Airport

# North Carolina Aviation Higher Education Program

UNIVERSITY	PROGRAM	ENROLLMENT
DUKE UNIVERSITY	AEROSPACE RESEARCH CERTIFICATE	17
NORTH CAROLINA STATE UNIVERSITY	AEROSPACE ENGINEERING BACHELOR OF SCIENCE	458
ELIZABETH CITY STATE UNIVERSITY	AVIATION SCIENCE BACHELOR OF SCIENCE	123
UNIVERSITY OF MOUNT OLIVE	AVIATION AND BUSINESS MANAGEMENT BACHELOR OF SCIENCE	19

Source: Higher education institutions. Enrollment as of Fall 2023.

COLLEGE	PROGRAM	STUDENTS
ASHEVILLE-BUNCOMBE TECHNICAL COMMUNITY COLLEGE	AVIATION MANAGEMENT & CAREER PILOT TECHNOLOGY	53
	CONTINUING EDUCATION	47
AVIATION INSTITUTE OF MAINTENANCE (CHARLOTTE)	AVIATION MAINTENANCE TECHNICIAN	217
BLUE RIDGE COMMUNITY COLLEGE	CONTINUING EDUCATION	6
BRUNSWICK COMMUNITY COLLEGE	CONTINUING EDUCATION	18
CALDWELL COMMUNITY COLLEGE AND TECHNICAL INSTITUTE	CONTINUING EDUCATION	12
CAPE FEAR COMMUNITY COLLEGE	CONTINUING EDUCATION	16
COASTAL CAROLINA COMMUNITY COLLEGE	CONTINUING EDUCATION	6
COLLEGE OF THE ALBEMARLE	AVIATION SYSTEMS TECHNOLOGY	34
	CONTINUING EDUCATION	27
CRAVEN COMMUNITY COLLEGE	AVIATION MANAGEMENT & CAREER PILOT TECHNOLOGY	16
	AVIATION SYSTEMS TECHNOLOGY	51
	CONTINUING EDUCATION	54
EDGECOMBE COMMUNITY COLLEGE	CONTINUING EDUCATION	15
FAYETTEVILLE TECHNICAL COMMUNITY COLLEGE	CONTINUING EDUCATION	19
FORSYTH TECHNICAL COMMUNITY COLLEGE	AVIATION SYSTEMS TECHNOLOGY	49
GUILFORD TECHNICAL COMMUNITY COLLEGE	AVIATION ELECTRONICS (AVIONICS) TECHNOLOGY	29
	AVIATION MANAGEMENT & CAREER PILOT TECHNOLOGY	107
	AVIATION MANUFACTURING TECHNOLOGY	35
	AVIATION SYSTEMS TECHNOLOGY	175
	CONTINUING EDUCATION	164
LENOIR COMMUNITY COLLEGE	AVIATION MANAGEMENT & CAREER PILOT TECHNOLOGY	21
	CONTINUING EDUCATION	230
MITCHELL COMMUNITY COLLEGE	CONTINUING EDUCATION	44
RANDOLPH COMMUNITY COLLEGE	CONTINUING EDUCATION	5
ROWAN-CABARRUS COMMUNITY COLLEGE	CONTINUING EDUCATION	73
SANDHILLS COMMUNITY COLLEGE	AVIATION MANAGEMENT & CAREER PILOT TECHNOLOGY	21
	CONTINUING EDUCATION	4
STANLY COMMUNITY COLLEGE	CONTINUING EDUCATION	165
VANCE-GRANVILLE COMMUNITY COLLEGE	CONTINUING EDUCATION	35
WAKE TECHNICAL COMMUNITY COLLEGE	CONTINUING EDUCATION	67
WAYNE COMMUNITY COLLEGE	AVIATION SYSTEMS TECHNOLOGY	33
WILSON COMMUNITY COLLEGE	CONTINUING EDUCATION	2

Source: North Carolina Community College System  
 Named program enrollments reflect Fall 2023.  
 Continuing education enrollments reflect calendar year 2023.

# Economic Impacts of North Carolina Airports



Harnett Regional Jetport unveiled its new 7,000-square-foot state-of-the-art terminal building in June 2024. It provides a modern, comfortable, convenient space for travelers and crew.

## ANNUAL ECONOMIC IMPACTS

AIRPORT TYPE	JOBS	PERSONAL INCOME	STATE AND LOCAL TAXES	ECONOMIC OUTPUT
Commercial Service	396,980	\$31,627,590,000	\$4,427,180,000	<b>\$80,932,290,000</b>
General Aviation	30,660	\$2,527,990,000	\$378,926,000	<b>\$7,185,290,000</b>
<b>TOTAL</b>	<b>427,640</b>	<b>\$34,155,580,000</b>	<b>\$4,806,106,000</b>	<b>\$88,117,580,000</b>

## COMMERCIAL SERVICE AIRPORT IMPACTS

AIRPORT AND NAME	CITY/TOWN	JOBS	PERSONAL INCOME	STATE AND LOCAL TAXES	ECONOMIC OUTPUT
OAJ Albert J. Ellis	Jacksonville	3,805	\$205,360,000	\$37,950,000	<b>\$612,340,000</b>
AVL Asheville Regional	Asheville	22,475	\$1,125,920,000	\$324,610,000	<b>\$3,855,480,000</b>
CLT Charlotte Douglas International	Charlotte	167,045	\$15,234,690,000	\$2,007,160,000	<b>\$36,578,000,000</b>
EWN Coastal Carolina Regional	New Bern	2,145	\$119,110,000	\$20,260,000	<b>\$346,750,000</b>
JQF Concord-Padgett Regional	Concord	5,310	\$474,140,000	\$66,810,000	<b>\$1,110,350,000</b>
FAY Fayetteville Regional	Fayetteville	5,285	\$276,980,000	\$48,870,000	<b>\$829,230,000</b>
GSO Piedmont Triad International	Greensboro	28,990	\$3,159,900,000	\$385,570,000	<b>\$9,903,900,000</b>
PGV Pitt-Greenville	Greenville	1,275	\$90,760,000	\$15,870,000	<b>\$234,070,000</b>
RDU Raleigh-Durham International	Raleigh/Durham	139,745	\$9,848,490,000	\$1,327,760,000	<b>\$24,130,240,000</b>
ILM Wilmington International	Wilmington	20,905	\$1,092,240,000	\$192,320,000	<b>\$3,331,930,000</b>
<b>TOTAL</b>		<b>396,980</b>	<b>\$31,627,590,000</b>	<b>\$4,427,180,000</b>	<b>\$80,932,290,000</b>

### Impact Analysis Methodology

North Carolina State University's Institute for Transportation Research and Education (ITRE) analyzed data from 2023, the most recent year complete data is available, primarily provided by North Carolina's 72 public service airports and the Federal Aviation Administration. ITRE used the IMPLAN model to compute economic impact.

The commercial service airport analysis quantifies the impacts of leisure and business travelers to North Carolina and business travelers from North Carolina, on-airport

contributions (jobs, income and spending by tenants such as airlines, rental car companies and airport security) and the impact of airport capital projects and operations (construction, facility maintenance and operational services).

The general aviation airport analysis quantifies the impact of jobs supported by the airport directly, jobs supported by businesses that rely on the airport, and the impact of visitors.

## GENERAL AVIATION AIRPORT IMPACTS

AIRPORT AND NAME		CITY/TOWN	JOBS	PERSONAL INCOME	STATE AND LOCAL TAXES	ECONOMIC OUTPUT
AFP	Anson County/Jeff Cloud Field	Wadesboro	85	\$7,730,000	\$874,000	\$17,220,000
GEV	Ashe County	Jefferson	210	\$18,760,000	\$2,058,000	\$48,020,000
HBI	Asheboro Regional	Asheboro	145	\$11,380,000	\$1,299,000	\$26,420,000
7A8	Avery County/Morrison Field	Spruce Pine	145	\$9,770,000	\$1,038,000	\$25,540,000
HSE	Billy Mitchell	Hatteras	30	\$2,570,000	\$1,317,000	\$5,890,000
BUY	Burlington Alamance Regional	Burlington	1,200	\$92,330,000	\$11,203,000	\$283,090,000
SUT	Cape Fear Regional Jetport/Howie Franklin Field	Oak Island	2,075	\$196,780,000	\$35,270,000	\$557,430,000
EQY	Charlotte-Monroe Executive	Monroe	420	\$33,710,000	\$5,139,000	\$90,070,000
CTZ	Clinton-Sampson County	Clinton	55	\$4,590,000	\$554,000	\$15,070,000
CPC	Columbus County Municipal	Whiteville	765	\$58,880,000	\$38,767,000	\$203,730,000
ONX	Currituck County Regional	Currituck	125	\$10,380,000	\$2,125,000	\$30,930,000
EYF	Curtis L. Brown Jr. Field	Elizabethtown	170	\$16,520,000	\$4,304,000	\$62,590,000
MQI	Dare County Regional	Manteo	505	\$37,050,000	\$5,333,000	\$111,870,000
EXX	Davidson County Executive	Lexington	710	\$53,260,000	\$6,660,000	\$137,350,000
DPL	Duplin County	Kenansville	455	\$34,270,000	\$6,308,000	\$146,370,000
ECG	Elizabeth City Regional	Elizabeth City	3,715	\$335,570,000	\$21,377,000	\$504,690,000
ZEF	Elkin Municipal	Elkin	85	\$7,290,000	\$880,000	\$17,640,000
FFA	First Flight	Kill Devil Hills	135	\$12,800,000	\$1,556,000	\$29,120,000
MRN	Foothills Regional	Morganton	125	\$10,340,000	\$1,459,000	\$25,250,000
AKH	Gastonia Municipal	Gastonia	75	\$5,180,000	\$619,000	\$12,340,000
IXA	Halifax-Northampton Regional	Roanoke Rapids	140	\$10,570,000	\$9,153,000	\$42,170,000
HRJ	Harnett Regional Jetport	Erwin	700	\$59,400,000	\$8,420,000	\$203,440,000
HNZ	Henderson-Oxford	Oxford	75	\$6,710,000	\$819,000	\$15,270,000
HKY	Hickory Regional	Hickory	335	\$26,620,000	\$3,417,000	\$66,140,000
7W6	Hyde County	Englehard	5	\$830,000	\$99,000	\$1,870,000
24A	Jackson County	Sylva	30	\$2,150,000	\$219,000	\$5,130,000
JNX	Johnston Regional	Smithfield	1,385	\$111,240,000	\$20,919,000	\$317,760,000
ISO	Kinston Regional Jetport at Stallings Field	Kinston	2,995	\$235,320,000	\$43,558,000	\$781,270,000
MEB	Laurinburg-Maxton	Maxton	635	\$50,260,000	\$10,403,000	\$187,280,000
IPJ	Lincolnton-Lincoln County Regional	Lincolnton	175	\$14,660,000	\$1,881,000	\$35,500,000
LBT	Lumberton Municipal	Lumberton	150	\$12,030,000	\$1,174,000	\$29,470,000
1A5	Macon County	Franklin	90	\$7,340,000	\$1,274,000	\$16,030,000
MCZ	Martin County	Williamston	60	\$5,120,000	\$657,000	\$11,900,000
MRH	Michael J. Smith Field	Beaufort	385	\$32,130,000	\$3,981,000	\$77,320,000
RUQ	Mid-Carolina Regional	Salisbury	735	\$54,250,000	\$7,290,000	\$142,180,000
43A	Montgomery County	Star	10	\$1,100,000	\$128,000	\$2,510,000
SOP	Moore County	Pinehurst/Southern Pines	650	\$58,130,000	\$7,114,000	\$135,520,000
MWK	Mount Airy/Surry County	Mount Airy	2,275	\$186,200,000	\$35,861,000	\$741,110,000
W40	Mount Olive Municipal	Mount Olive	230	\$17,110,000	\$1,914,000	\$41,460,000
EDE	Northeastern Regional	Edenton	85	\$7,810,000	\$972,000	\$17,860,000
W95	Ocracoke Island	Ocracoke	25	\$2,060,000	\$213,000	\$5,290,000
60J	Odell Williamson Municipal	Ocean Isle Beach	75	\$6,490,000	\$771,000	\$14,660,000
PMZ	Plymouth Municipal	Plymouth	65	\$5,880,000	\$697,000	\$13,550,000
TTA	Raleigh Executive Jetport at Sanford-Lee County	Sanford	530	\$42,890,000	\$4,996,000	\$104,210,000
TDF	Raleigh Regional at Person County	Roxboro	240	\$21,360,000	\$2,554,000	\$66,010,000
RCZ	Richmond County	Rockingham	40	\$3,300,000	\$415,000	\$8,330,000
SIF	Rockingham County NC Shiloh	Reidsville	365	\$33,580,000	\$3,482,000	\$86,850,000
RWI	Rocky Mount-Wilson Regional	Rocky Mount	375	\$28,480,000	\$2,561,000	\$84,350,000
FQD	Rutherford County	Rutherfordton	75	\$6,100,000	\$877,000	\$15,450,000
EHO	Shelby-Cleveland County Regional	Shelby	310	\$24,690,000	\$5,160,000	\$65,270,000
SCR	Siler City Municipal	Siler City	50	\$4,410,000	\$681,000	\$11,070,000
INT	Smith Reynolds	Winston-Salem	3,190	\$251,290,000	\$24,096,000	\$885,040,000
VUJ	Stanly County	Albemarle	580	\$47,240,000	\$5,301,000	\$113,820,000
SVH	Statesville Regional	Statesville	730	\$59,480,000	\$7,204,000	\$146,320,000
ETC	Tarboro-Edgecombe	Tarboro	75	\$6,810,000	\$117,000	\$15,570,000
LHZ	Triangle North Executive	Louisburg	395	\$34,100,000	\$4,339,000	\$85,550,000
ASJ	Tri-County	Ahoskie	50	\$4,140,000	\$490,000	\$9,390,000
ACZ	Wallace-Pender	Wallace	75	\$6,310,000	\$1,047,000	\$19,070,000
OCW	Washington-Warren	Washington	185	\$13,220,000	\$1,672,000	\$38,210,000
GWW	Wayne Executive Jetport	Goldsboro	305	\$26,160,000	\$410,000	\$63,980,000
RHP	Western Carolina Regional	Andrews	280	\$23,990,000	\$2,049,000	\$68,910,000
UKF	Wilkes County	North Wilkesboro	270	\$17,870,000	\$2,401,000	\$42,570,000
<b>TOTAL</b>			<b>30,660</b>	<b>\$2,527,990,000</b>	<b>\$378,926,000</b>	<b>\$7,185,290,000</b>



*Coastal Carolina Regional Airport's \$27 million terminal building project, completed in 2024, increased passenger capacity by 25% to meet growing demand and improved energy efficiency and resiliency.*



## DIVISION OF **AVIATION**

The North Carolina Department of Transportation Division of Aviation promotes the economic well-being of North Carolina by developing a safe and robust air transportation system.

### **Division of Aviation**

North Carolina Department of Transportation  
1050 Meridian Drive, Morrisville, NC 27560  
(919) 814-0550

[ncdot.gov/aviation](https://ncdot.gov/aviation)



@NCDivisionofAviation



ncaviation



NCDOT Division of Aviation



@NCAviation